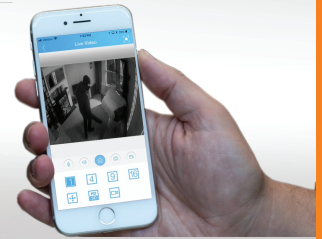




1080p



The Small Window Takes You To A Safe, Convenient Digital World & Perfect Life!

Rear side



iHVR8HD-1080NE



Specification

Model		iHVR8HD-1080NE
System	Main processor	Industrial grade embedded micro controller chip Huawei HIS chipset Hi3520DV300
	Operating system	Embedded LINUX operating system
	System resource	Multi-channel real-time recording synchronously, multi-channel real-time playback, multi-channel multi-user network operation, USB back up.
Display	Operation interface	16 bit real color GUI interface support mouse operation (Take all analog input as an example, others are depended on the selected channel mode)
	Display screen	1/4 screen
Video	Image encode	H.265 / H.264
	Monitor quality	VGA: 1080P ; HDMI: 1080P
	Playback quality	Max support 1080P under HVR and NVR mode; Max support AHD 1080N under DVR mode;
	Encode capability	8*1080N
	Decode capability	8*1080N@12fps
	Motion detection	Each channel can set 192 (16*12) detection area; can set multi-level of flexibility (for local analog channel only)
Audio	Audio compression	G.711A
Record and playback	Record mode	Manual、alarm、motion detection、timing
	Video search	Time、date、event、channel search
Storage	Video storage	Local HDD 、 Network
	Back up mode	Network backup、 USB portable HDD、 USB DVD-RW
Interface	Video input	8CH BNC
	Video output	1CH VGA, 1CH HDMI
	Audio input	4CH RCA
	Audio output	1CH RCA
	Alarm input	NO
	Alarm output	NO
	Network port	RJ45 10M/100M self-adaptive Ethernet port
	PTZ control	1 RS485; support multi kinds of PTZ Protocol
	USB port	2*USB2.0
	HDD port	1 SATA (each max support 6TB)
other	Tour	Yes
	Remote controller	Yes
	UTC	Yes
	Power	12V/2A
	Dimension	260(Length) x 221(Width) x 44(Height)

1080p

720p

Full D1

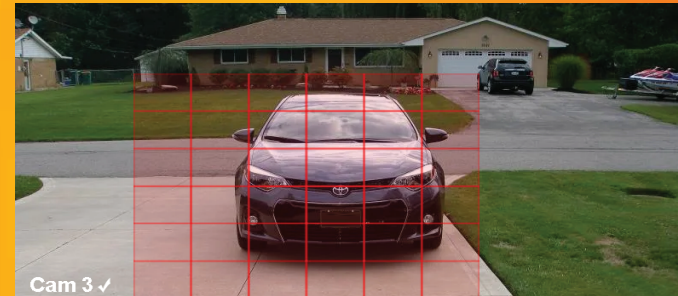
960h

CIF



Motion Detection

Have your DVR/XVR set to instantly send alert notifications to your email when motion is detected.



Remote Access

Remote monitoring over the internet through app by iPhone, iPad, Android, or by IP Address from Windows computers.

