



The Small Window Takes You To A Safe, Convenient Digital World & Perfect Life!

Rear side



iHVR4HD-1080



Specification

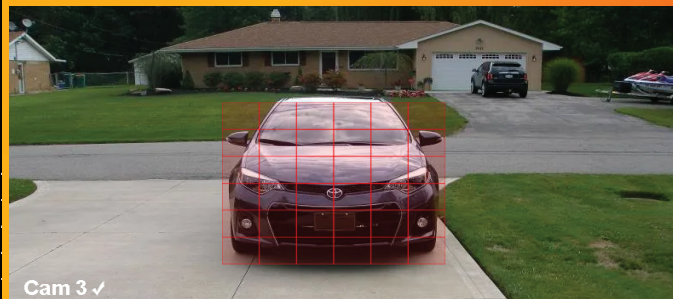
Model		iHVR4HD-1080	
System	Main processor	Industrial grade embedded micro controller chip Huawei HIS	
	Operating system	Embedded LINUX operating system	
	System resource	Multi-channel real-time recording synchronously, multi-16 bit real color GUI interface support mouse operation	
Display	Operation interface	(Take all analog input as an example, others are depended on 1/4 screen	
	Display screen	1/4 screen	
Video	Image encode	H.264(High Profile)	
	Monitor quality	VGA : 1080N ; HDMI : 1080N	
	Playback quality	4*1080N @25fps (960*1080) Coaxial HD Mode	
	Encode capability	4*1080N @25fps (960*1080) Coaxial HD Mode	
	Decode capability	4*1080N @25fps (960*1080) Coaxial HD Mode	
	Multi Mode Input & Playback Channels		Pure Analog: 4*AHD-1080N - 4 Playback, 4*AHD-720p - 4 Playback, 4*AHD-960H - 4 Playback
			Mixed Analog/IP: 2*AHD-720p (analog) + 8*720p (IP) - 2 Playback
			Pure IP: 8*1080p (IP) - 2 Playback, 8*720p (IP) - 4 Playback, 12*960p (IP) - 4 Playback
	Multi-mode video input		DVR mode : 4*1080N/4*720P/4*960H
			HVR mode: 2*720P+2*720P
		NVR mode: 8*1080P/12*960P/4*1080P/4*720P/1*1080P	
Motion detection	Each channel can set 192 (16*12) detection area ; can set		
Support camera	AHD、CVI、TVI、IPC、960H		
Audio	Audio compression	G.711A	
Record and playback	Record mode	Manual、alarm、motion detection、timing	
	Local playback	1-4ch playback synchronously; Under the mode of DVR, Max	
	Video search	Time、date、event、channel search	
Storage and back up	Space occupation	Video:1080N 30~40G/day*channel; 960P 20~30G audio : 691.2M/day*channel	
	Video storage	Local HDD、Network	
	Back up mode	Network backup、USB portable HDD、USB DVD-RW	
Interface	Video input	4CH BNC	
	Video output	1CH VGA、1CH HDMI	
	Audio input	4CH RCA	
	Audio output	1CH RCA	
	Alarm input	2CH Optional	
	Alarm output	1CH Optional	
	Network port	RJ45 10M/100M self-adaptive Ethernet port	
	PTZ control	1 RS485 ; support multi kinds of PTZ Protocol	
	USB port	2*USB2.0	
	HDD port	1 SATA (max support 6TB)	
Wireless port	3G、WIFI(extension via USB port)		
Other	Tour	Yes	
	Remote controller	Yes	
	Power	12V/2A	
	Dimension	260(Length) x234(Width) x47(Height)mm	

H.264 High performance Image Compression
Our DVR employs the H.264 high performance image compression algorithm for excellent image recording quality.



Motion Detection

Have your DVR/XVR set to instantly send alert notifications to your email when motion is detected.



Cam 3 ✓

Remote Access

Remote monitoring over the internet through app by iPhone, iPad, Android, or by IP Address from Windows computers.



Four in One Camera

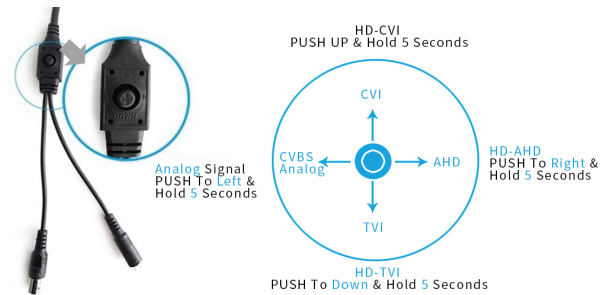
HD Analog Signal AHD, TVI, CVI, CVBS switch by OSD



Specifications

Model NO.	iHDIRDFIO-1080SNV
Video Output Mode	AHD/CVI/TVI/CVBS
Camera	
Image Sensor	Sony Starvis IMX291
Image Resolution	2.0 MP
Effective Pixels	1920*1080
TV System	PAL/NTSC
Video Output Mode	AHD/CVI/TVI: 1920*1080@30fps
Electronic Shutter	1/25s~1/50,000s , 1/30s~1/60,000s
S/N Ratio	≥50dB
Scanning System	Progressive Scan
Lens	
Focus Length	Board Lens 3.6mm
Focus Control	Fixed
Lens Type	Fixed
Pixels	3M Pixels
Auto Iris Support	N/A
Night Vision	
Infrared LED	φ 5X24PCS
Infrared Distance	20M
IR Status	Under 10 Lux by CDS
IR Power On	CDS Auto Control
Camera Features	
Starlight	YES
Day/Night	YES
OSD Menu Language	YES
White Balance	AUTO / MANUAL
Gain Control	AUTO
Noise Reduction	DNR
Picture TVjustment	YES
WDR	DWDR
OSD Support	YES
Dip Switch	N/A
General	
Waterproof	N/A
Dual Voltage	N/A
IR Cut Filter	YES
Heater	N/A
Audio	N/A
Operation Temperature	-10°C ~ +50°C RH95% Max
Storage Temperature	-20°C ~ +60°C RH95% Max
Power Source	DC12V±10%, 550mA
Dimension	φ 94 x 69(H) mm
Weight	500g

Mode switch by OSD

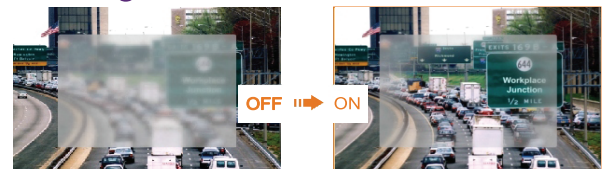


Multi-function

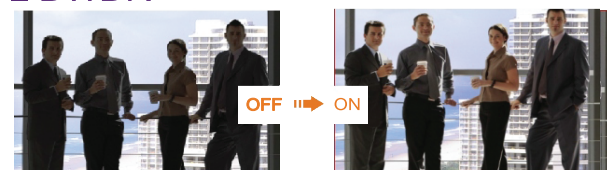
2D/3D-NR



Defog



DWDR



Four in One Camera

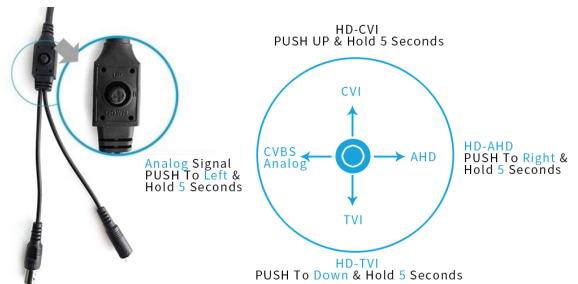
HD Analog Signal AHD, TVI, CVI, CVBS
switch by OSD



Specifications

Model NO.	iHDIRBFIO-1080SNV
Video Output Mode	AHD/CVI/TVI/CVBS
Camera	
Image Sensor	Sony Starvis IMX291
Image Resolution	2.0 MP
Effective Pixels	1920*1080
TV System	PAL/NTSC
Video Output Mode	AHD/CVI/TVI: 1920*1080@30fps
Electronic Shutter	1/25s~1/50,000s, 1/30s~1/60,000s
S/N Ratio	≥50dB
Scanning System	Progressive Scan
Lens	
Focus Length	Board Lens 3.6mm
Focus Control	Fixed
Lens Type	Fixed
Pixels	3M Pixels
Auto Iris Support	N/A
Night Vision	
Infrared LED	∅ 5X24PCS
Infrared Distance	20M
IR Status	Under 10 Lux by CDS
IR Power On	CDS Auto Control
Camera Features	
Starlight	YES
Day/Night	YES
OSD Menu Language	YES
White Balance	AUTO / MANUAL
Gain Control	AUTO
Noise Reduction	DNR
Picture TVjustment	YES
WDR	DWDR
OSD Support	YES
Dip Switch	N/A
General	
Waterproof	YES
Dual Voltage	N/A
IR Cut Filter	YES
Heater	N/A
Audio	N/A
Operation Temperature	-10°C ~ +50°C RH95% Max
Storage Temperature	-20°C ~ +60°C RH95% Max
Power Source	DC12V±10%,550mA
Dimension	86(W) x 60(H) x 55(D)mm
Weight	700g

Mode switch by OSD

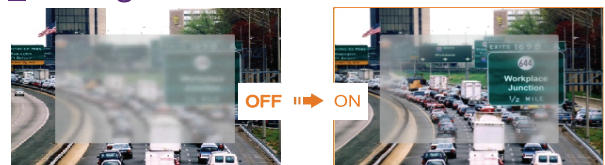


Multi-function

2D/3D-NR



Defog



DWDR

